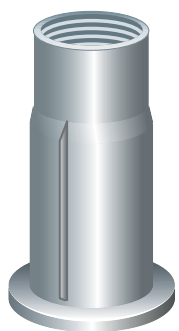


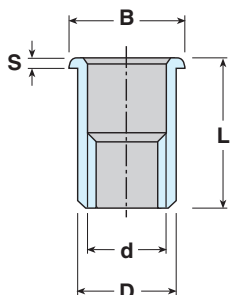
## INSERTI FILETTATI A TESTA CILINDRICA IN ACCIAIO PER COMPOSITI THREADED INSERTS CYLINDRICAL HEAD IN STEEL FOR COMPOSITES BLIND-EINNIETMUTTERN-FLACHKOPF AUS STAHL-COMPOSITE


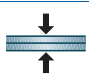



Acciaio Zincato  
Zinc plated steel  
Stahl Verzinkt

La particolare geometria di questo inserto consente di ottenere un'ampia controtesta, rendendolo adatto per l'applicazione su materiali plastici o composti.

The particular geometry of this insert provides an extensive tailstock, making it suitable for application on plastic or compounds



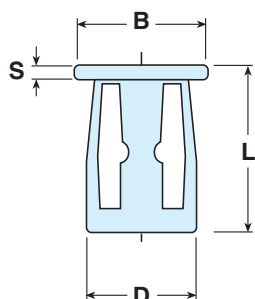
d 6H	D mm	B mm	S mm	 mm	 mm	L <sub>1</sub> mm	L mm	Cod. Art. Item code		€ per 1.000
M5	7	12,5	1,0	7,50	0,5÷4,50	9,90	22	32M5 IPP	3.000	
M6	9	15,5	1,60	8,90	0,5÷7,10	12,80	26	32M6 IPP	3.000	
M8	11	19,8	1,70	13,25	0,5÷7,10	14,50	29	32M8 IPP	3.000	


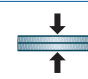

## INSERTI FILETTATI A TESTA CILINDRICA JACKNUT THREADED INSERTS CYLINDRICAL HEAD IN STEEL FOR PLASTIC BLIND-EINNIETMUTTERN-FLACHKOPF AUS PLASTIK-STAHL

### THREADED INSERTS CYLINDRICAL HEAD IN STEEL FOR PLASTIC BLIND-EINNIETMUTTERN-FLACHKOPF AUS PLASTIK-STAHL



Acciaio Zincato  
Zinc plated steel  
Stahl Verzinkt



d 6H	D mm	B mm	S mm	 mm	 mm	L mm	Cod. Art. Item code		€ per 1.000
M4	8,1	11,9	1,8	8,2	0,4-4,7 4,7-9,5	16,6 21,4	32M4 JNC 32M4 JNL	5.000	
M5	9,7	13,5	1,8	9,8	0,4-4,7 4,7-9,5	18,2 22,6	32M5 JNC 32M5 JNL	3.000	
M6	11,2	15,9	1,8	11,3	0,4-4,7 4,7-9,5	18,6 23,4	32M6 JNC 32M6 JNL	3.000	