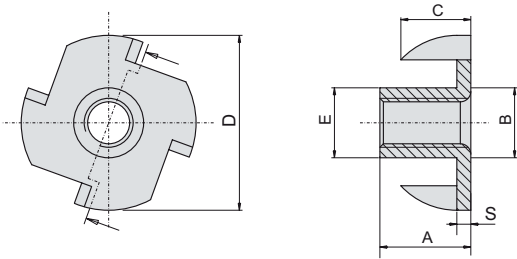


DADI TONDI FILETTATI A 4 PUNTE PER LEGNO

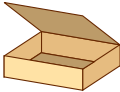
ROUND THREADED NUTS 4 TIPS FOR WOOD



Materiale: acciaio zincato

Questi dadi vengono inseriti a filo nel legno o in agglomerati grazie alle 4 punte, rappresentano il sistema ideale per fissare parti che possono essere sempre smontate.

These nuts are inserted in wood or wire in agglomerations with 4 bits, represent the ideal system for fixing parts which can be disassembled.

Ø vite	Codice	A	B	C	D	S	
M4	35 DA14PM400	7,5	5,5	5,0	17,00	1,0	5000
M5	35 DA14PM501	6,5	6,5	5,0	17,00	1,0	5000
	DA14PM502	7,0	6,5	5,0	17,00	1,0	5000
	DA14PM503	8,0	6,5	5,0	17,00	1,0	5000
	DA14PM504	10,0	6,5	5,0	17,00	1,0	5000
M6	35 DA14PM601	9,0	8,2	7,5	17,00	1,2	5000
	DA14PM602	10,0	8,2	7,5	17,00	1,2	5000
	DA14PM603	12,0	8,2	7,5	17,00	1,2	5000
M8	35 DA14PM801	11,0	10,8	8,0	17,00	1,5	5000
M10	35 DA14PM101	12,0	11,5	9,5	17,00	1,5	4000